

Infinera Digital Optical Network の構成

Infinera Management Suite

- EMS, Node Manager, Planning
- North-bound interfaces to OSS

IQ Network Operating System

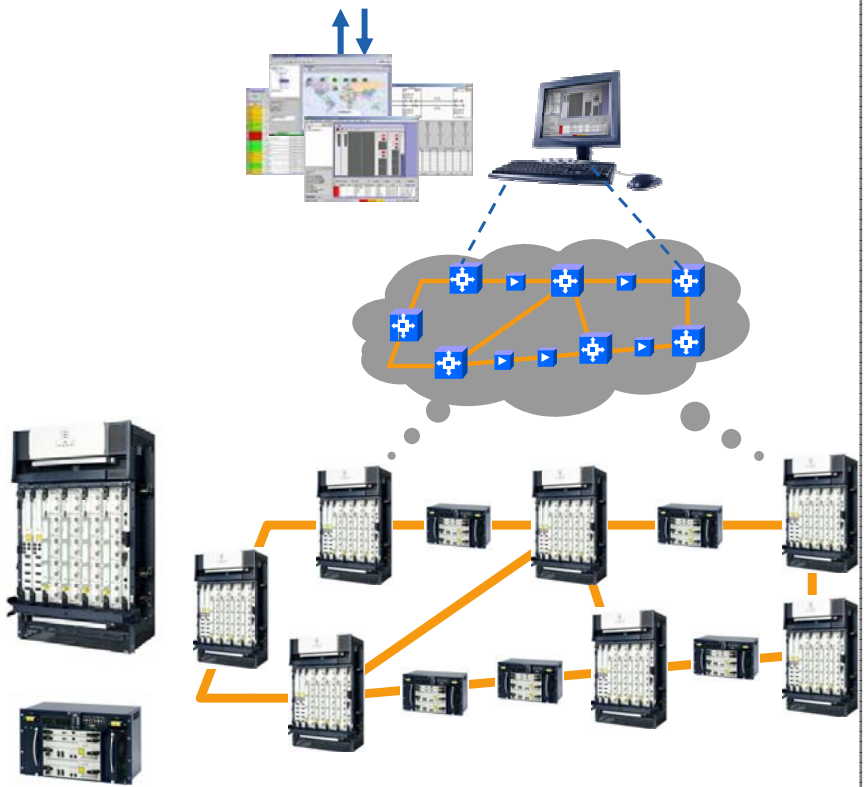
- End-end GMPLS control plane
- Automated service provisioning

DTN Digital Node

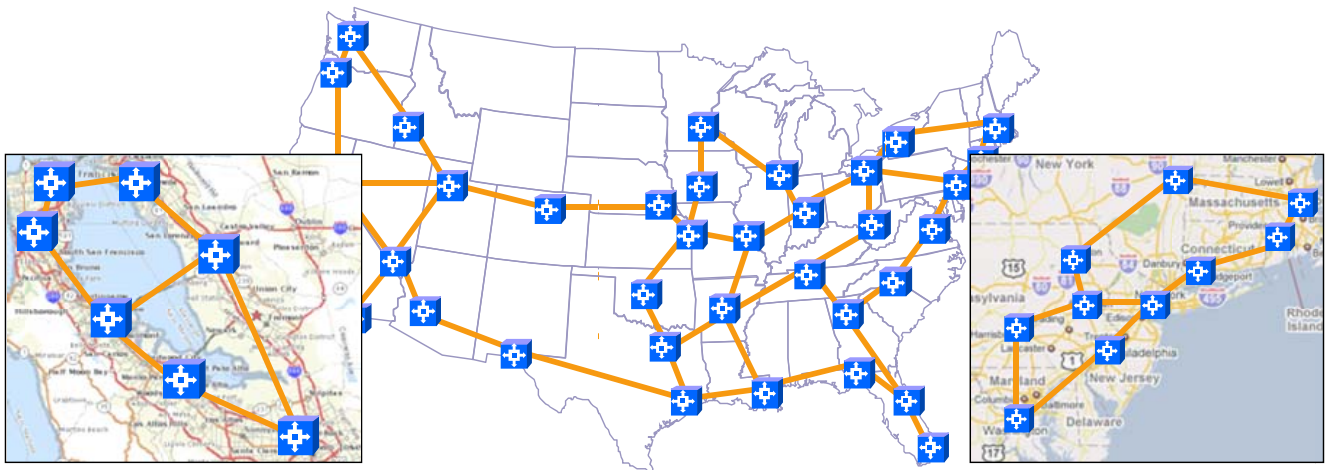
- PIC-based DWDM + ODU1 bandwidth management

DTN Optical Line Amplifier

- Reach extension between DTN
- EDFA and Raman options



Infinera のアプリケーション



Metro Core

- MSO Ethernet & business services
- Datacenter interconnect
- Carrier distribution

Long Haul

- Carrier backbones
- Wholesale services
- MSO inter-region transport

Regional

- Competitive carriers
- Tier 2 & 3 cities

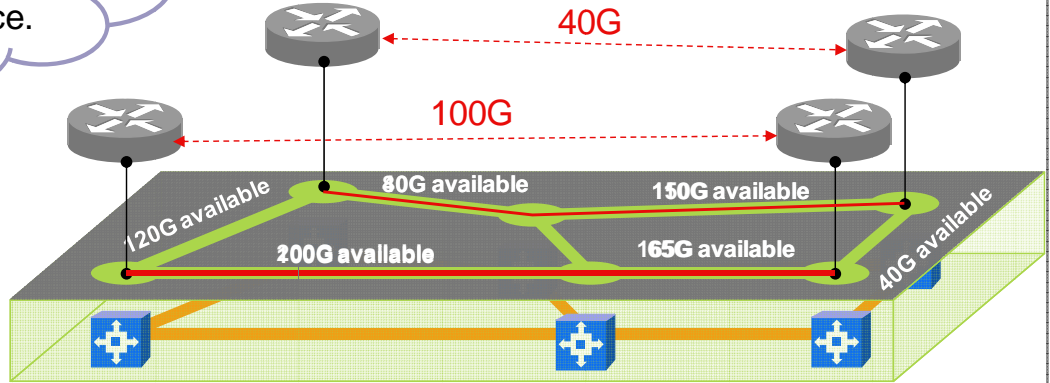
Super-λ サービスのための帯域の仮想化

Solution: De-couple service from waves

If I have the bandwidth,
I know I can support
the service.



NOC

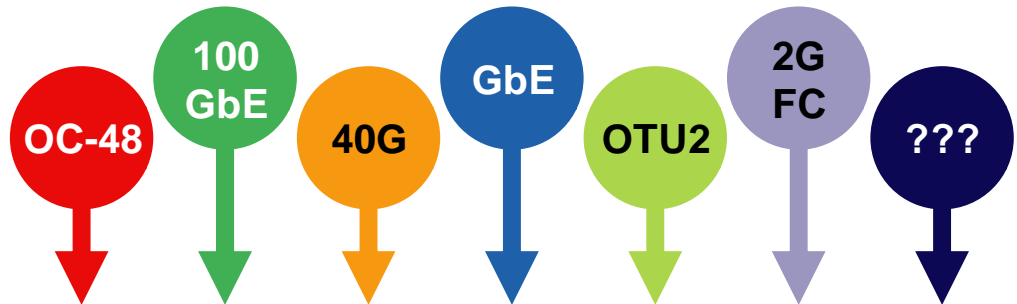


サービスプロビジョニングとλ エンジニアリングを分離

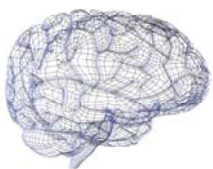
サービスは波長のビットレートから独立

既存のインフラストラクチャの上でスーパーλ サービス (ie: 40G, 100GbE)

プログラマブルなオプティカルネットワーク



Network Intelligence



Service Adapters

Bandwidth Virtualization

Digital switching – line/trib separation - VCAT

PIC-based Optical Engine

10G waves

40G waves

Add/Drop

Reach Options

CD/PMD Comp