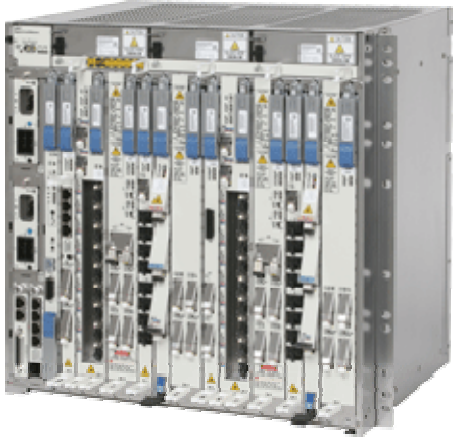
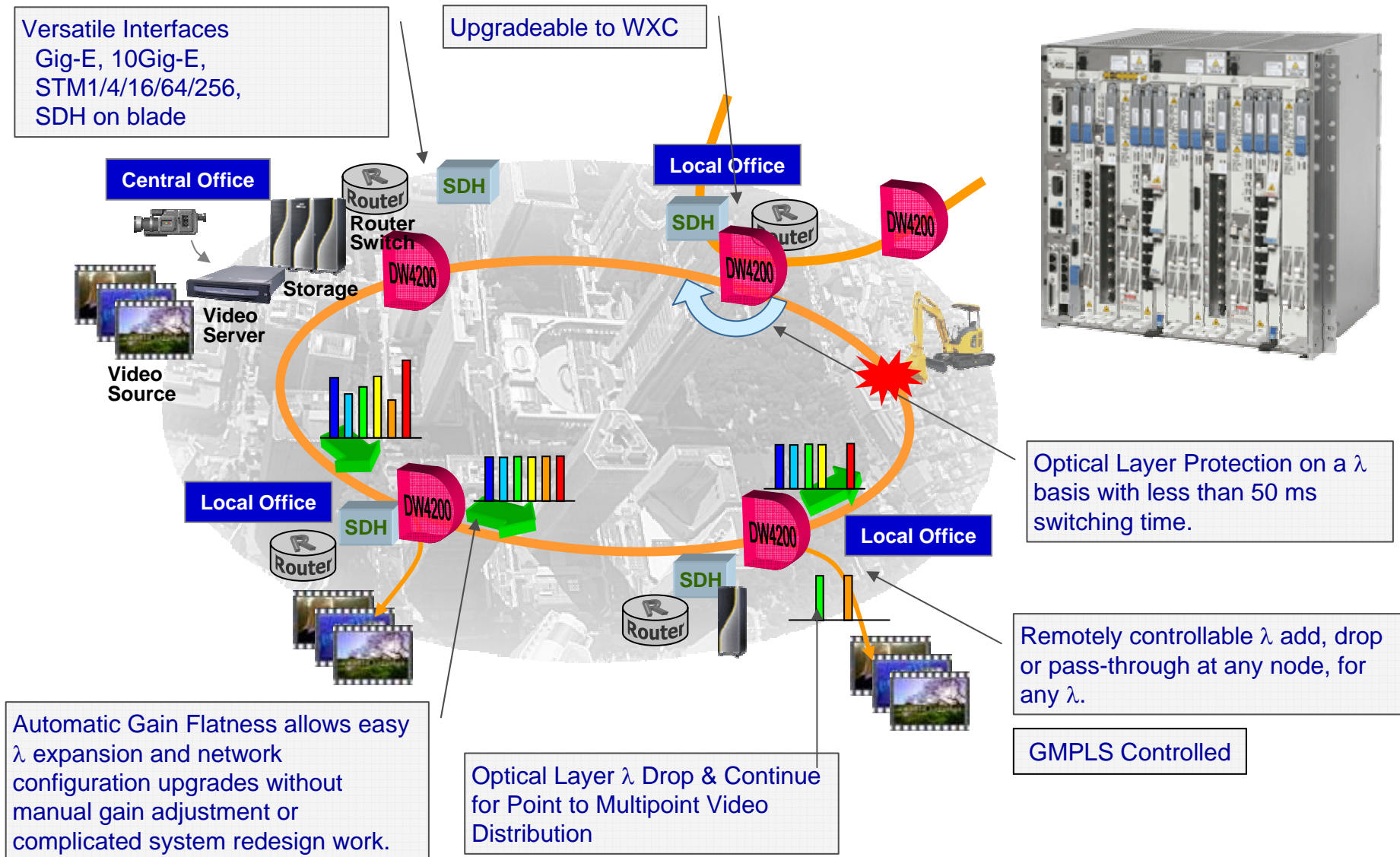


SpectralWave DW4200: Metro ROADM application

40G ready Next Generation Optical Platform



GMPLS PCE demonstration

PCE Capability

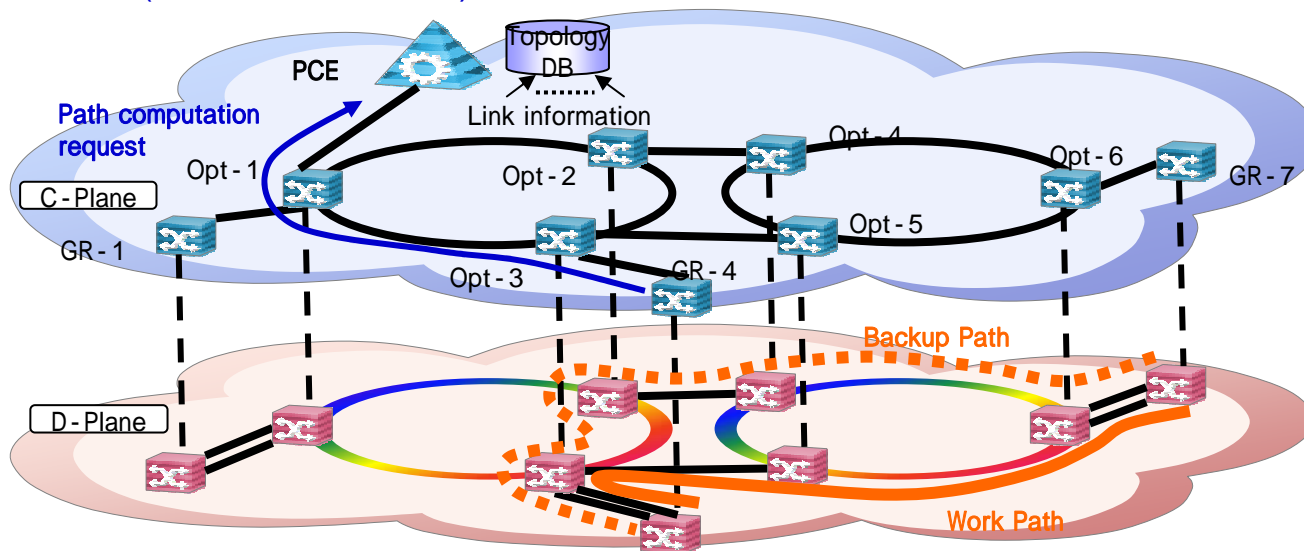
- Unprotected path
- Protected path (Node, Link and SRLG disjoint supported)

Supported protocols

- PCEP, OSPF-TE (with extensions for **PCE** Discovery)

Demonstration

- Path provisioning with a PCE and GMPLS nodes.
- On-demand path computation of an unprotected path and a set of disjoint paths with constraints (bandwidth, cost,...).



PCE: Path Computation Element SRLG: Shared Risk Link Groups

This work was partly supported by National Institute of Information and Communications Technology (NICT).



GUI



PCE

GMPLS
Node