

GMPLS Emulator **KDDI**

KDDI R&D LABS

■ Objectives

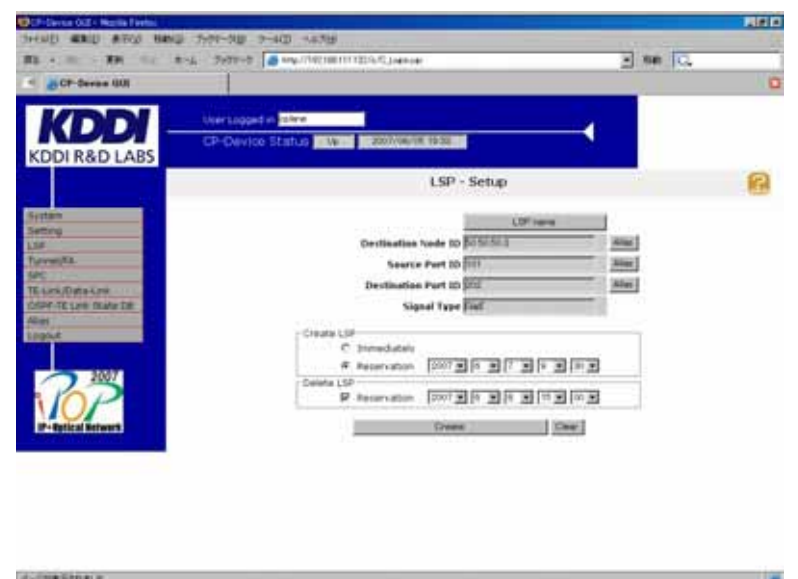
- In order to accelerate the introduction of GMPLS technologies, KDDI R&D is developing
 - GMPLS Emulator
 - To enable non-GMPLS capable equipment to be controlled by GMPLS
 - To envision the future lambda path service based on GMPLS
 - GMPLS protocol tester
 - To internally test GMPLS protocols
 - To evaluate GMPLS functions
 - To conduct a kind of GMPLS conformance tests

■ GMPLS Specification

- Hardware
 - Linux box
- Software
 - Signaling basically follows
 - RFC 3209
 - RFC 3471
 - RFC 3473
 - Routing basically follows
 - RFC 3630
 - RFC 4202
 - RFC 4203

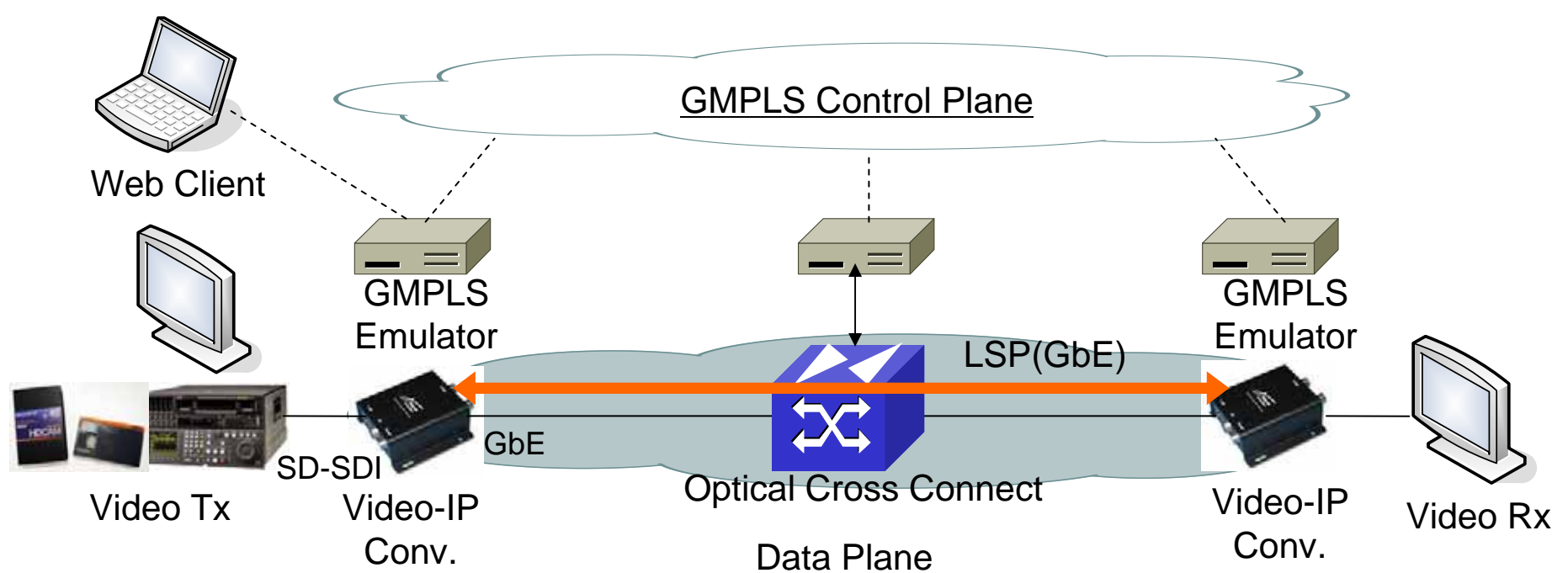
■ GUI

- Web-based user interface



■ Demonstration

- GMPLS lambda-LSP is provisioned for GbE connection.
- 270Mbit/s uncompressed (SD-SDI) video signal is transported



■ Remarks

- KDDI R&D developed the GMPLS Emulator
 - to enable a non-GMPLS equipment to support GMPLS.
 - to provide a GMPLS lambda service.
 - to conduct a GMPLS protocol test.

GMPLS Emulator helps KDDI to introduce GMPLS technology in KDDI network.