

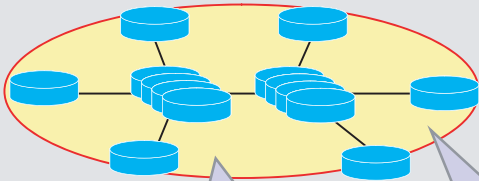
IP+Optical network architecture for low cost and highly efficient network



NTT Network Service Systems Laboratories

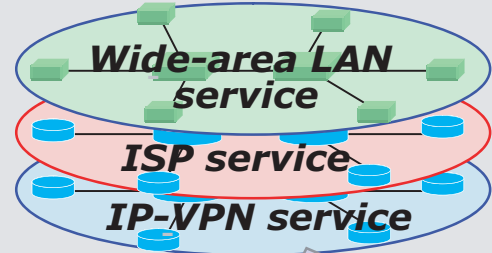
Current Issues

Large capacity IP network



Issue 1
Fixed layer 1 network topology
 (Inefficient resource usage)

Various service networks



Issue 2
High cost for reliable network
 (Many redundant resources)

Issue 3
Separate networks
 (Expensive CAPEX and OPEX)

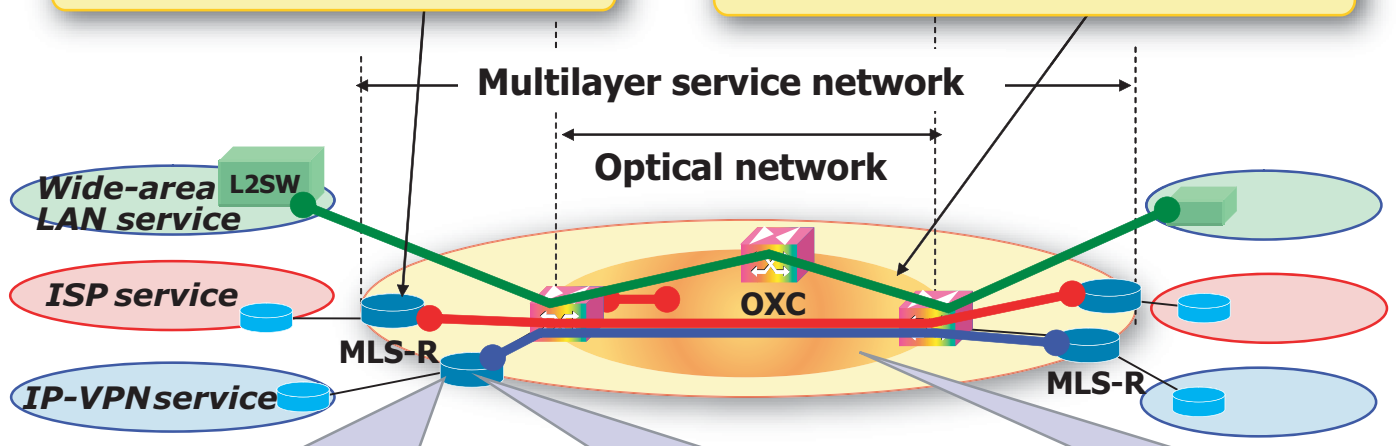
Our solution - Multilayer service network

Multilayer coordination

- Efficient resource usage with high reliability

L1VPN

- Independent operation over shared infrastructure



Multilayer pass-through
 Dynamic resource allocation for burst traffic (Issue 1)

Multilayer recovery
 Recovery considering service network topology (Issue 2)

L1VPN
 Flexible layer 1 network provisioning (Issue 3)



Multilayer service network technology and deployment



NTT Network Service Systems Laboratories

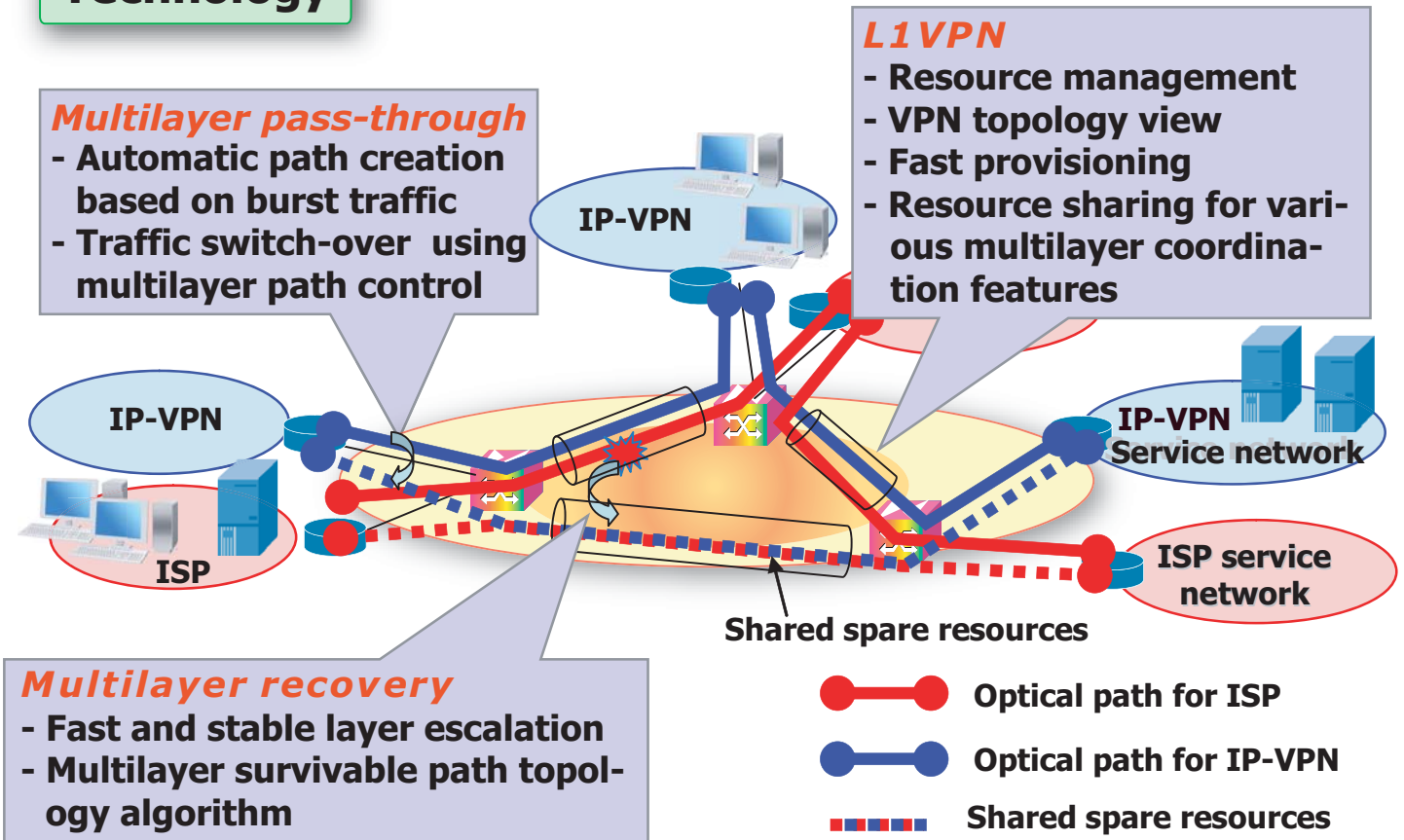
Technology

Multilayer pass-through

- Automatic path creation based on burst traffic
- Traffic switch-over using multilayer path control

L1VPN

- Resource management
- VPN topology view
- Fast provisioning
- Resource sharing for various multilayer coordination features

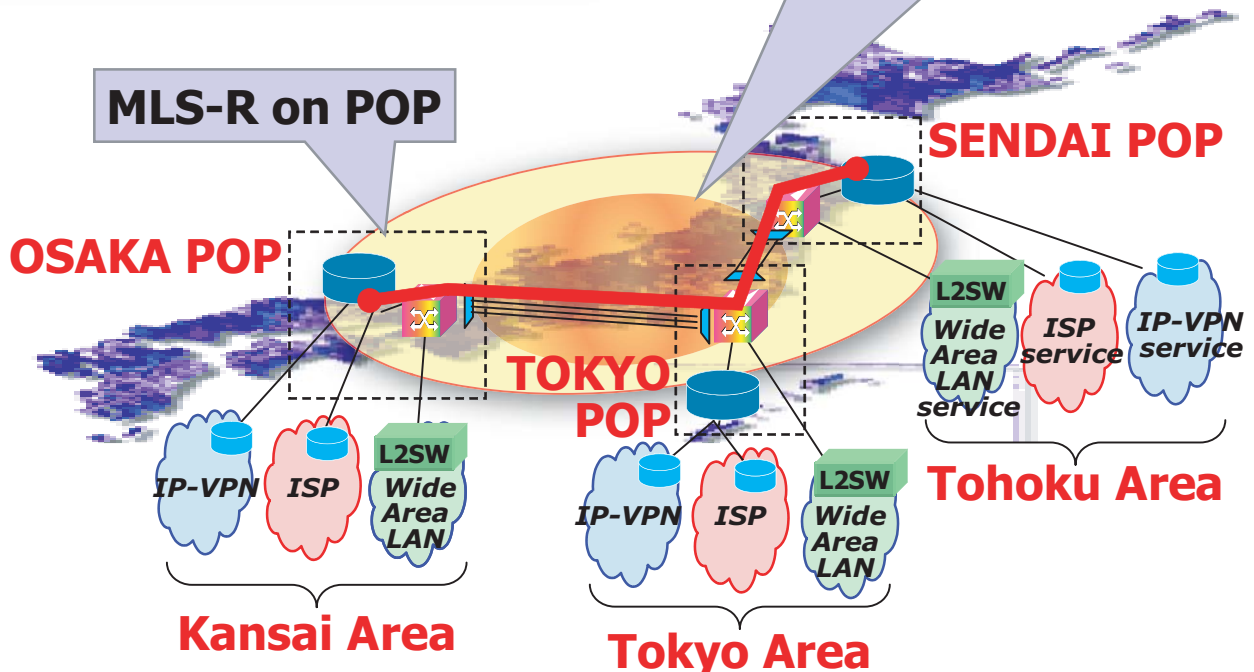


Multilayer recovery

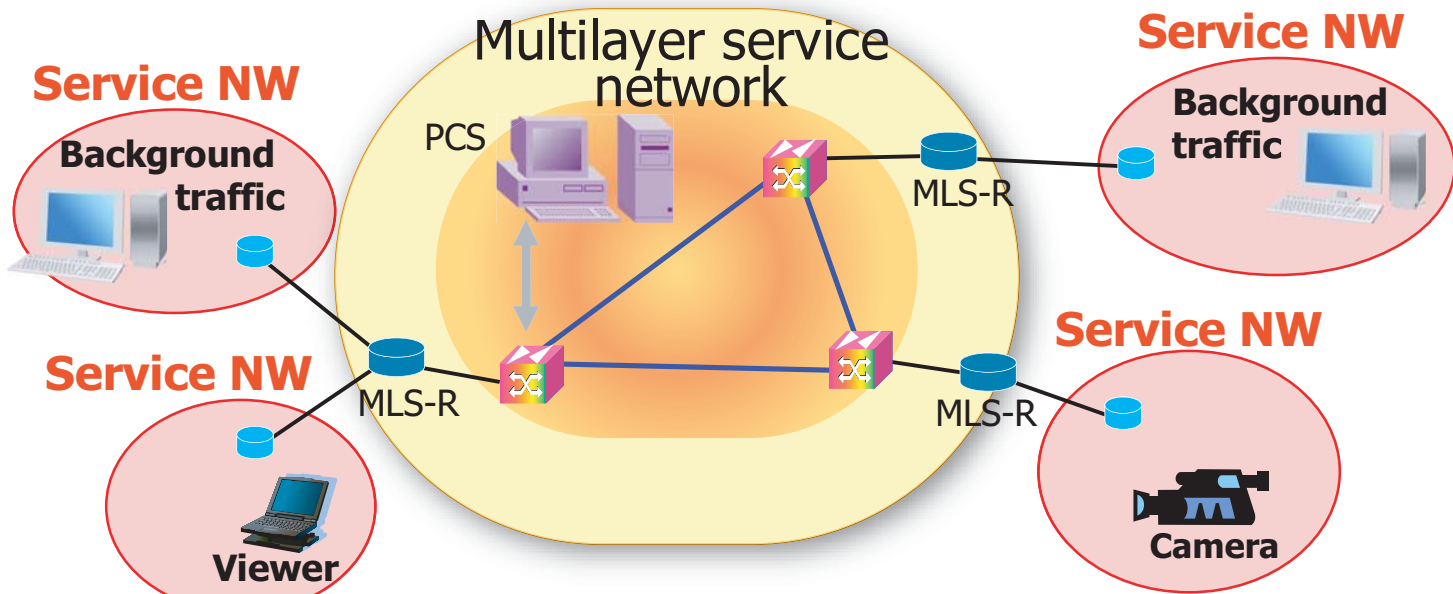
- Fast and stable layer escalation
- Multilayer survivable path topology algorithm

Deployment example

L1VPN for inter-prefecture



Multilayer coordination



PCS: Path Computation Server

L1VPN

